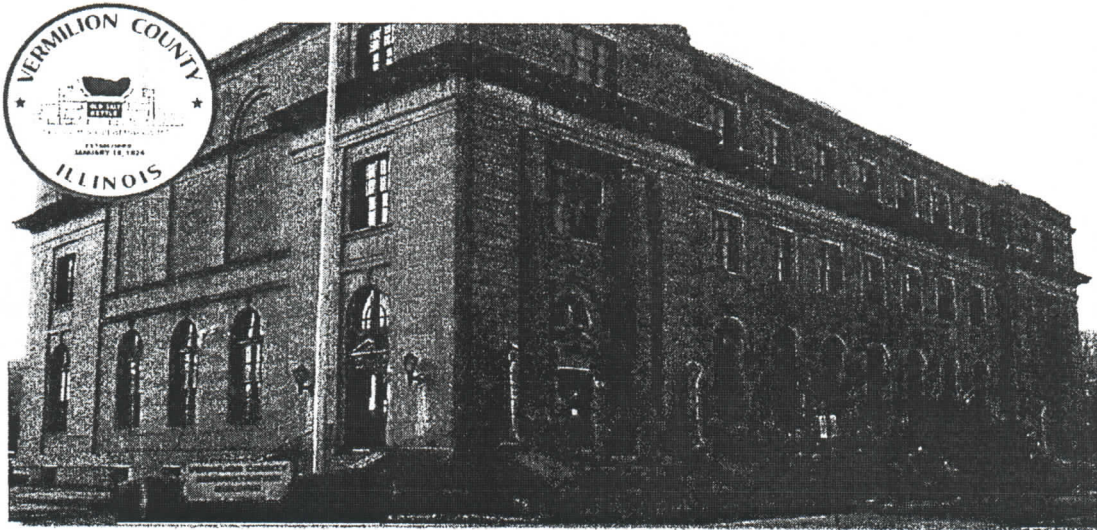


Contract to Provide GIS Management and Consulting Services



Between:
Vermilion County, Illinois

and

Bruce Harris & Associates Inc.
21 N. River Street
Batavia, Illinois 60510
630.761.0951
info@bruceharris.com

 **Bruce Harris**
& Associates, Inc.

Table of Contents

Table of Contents

Contract	2
Project Introduction	3
Objectives	3
Statement of Work	4
Services to be Provided	4
Progress Reporting	5
Project Team Responsibilities	5
Additional Provisions	6
Term of Contract	7

Contract

Contract

THIS AGREEMENT entered into this _____ day of _____ 2021, between Bruce Harris & Associates, Inc., hereinafter called "Contractor", party of the first part, and Vermilion County, Illinois, hereinafter called "Vermilion County", party of the second part, WITNESSETH:

THAT WHEREAS, the Contractor is in the business of providing Geographic Information Services for various governmental agencies in the United States, and

WHEREAS, Vermilion County is desirous of having the Contractor provide GIS Management and Consulting Services to the County of Vermilion.

NOW, THEREFORE, in consideration of the covenants and conditions of the Contract, IT IS AGREED between the parties as follows:

Project Introduction

Project Introduction

Bruce Harris & Associates and Vermilion County originally began working together in 2004 on the County's initial GIS implementation project. The project included aerial photography, parcel mapping, and farmland assessment services. In 2008, Bruce Harris & Associates began working as Vermilion County's GIS management service provider. We have provided a wide variety of services to various offices including the Supervisor of Assessments, County Clerk, EMA, and Highway Department. We have also created multiple GIS websites for the County. This contract is a continuation of these services.

Objectives

Vermilion County, Illinois intends to further the County's use and expansion of GIS throughout the County staff. The County's GIS intends to serve the internal needs of the County staff as well as provide communication, data integration, and access to the public. Project goals include:

- GIS Website Improvements and Enhancements
- Expand Use of GIS Throughout the County
- Support All County Department GIS efforts
- Use the latest in GIS technology to improve communication and decision-making
- Continued improvement of emergency response efforts through expanded use of GIS

These GIS Consulting and GIS Management services include the following:

- Parcel Map Maintenance and Support
- MapAscend Parcel Editing Tools support
- BHA Farmland Calculation Tools support
- Parcel Access Template (GIS Property Search Website) Enhancements and Support
- GIS Integration with DevNET
- ArcGIS Enterprise (ArcSDE) Database Administration, Maintenance and Support
- ArcGIS Enterprise (Map Services) Administration, Maintenance and Support
- ArcGIS Online Administration
- GIS Website Creation, Administration, Maintenance and Support
- Training and Technical Support for GIS Users
- Damage Assessment GIS Support
- Emergency Management GIS Support Services

This agreement shall support the following proprietary software/systems currently being used at Vermilion County:

- BHA Farmland Tools
- Parcel Access Template (PAT)
- MapAscend Productivity Enhancements

Statement of Work

Statement of Work

The Contractor will provide the necessary expertise and resources to support Vermilion County's GIS. The Contractor staff will manage and expand the use of GIS within Vermilion County. The Contractor staff will act as the County's GIS Coordinator/Manager. The Contractor will oversee all aspects of GIS implementation in the County related to Esri's ArcGIS Platform as well as countywide GIS data acquisition efforts.

Services to be Provided

Bruce Harris & Associates, Inc. (BHA) staff will provide services designed to support and expand the current GIS and/or implement a new GIS. BHA's Project Manager will allocate staff resources in accordance with the expertise level required to complete a given task. The following personnel shall be made available to Vermilion County:

Project Manager - A Project Manager will be assigned and will be responsible for collecting and organizing tasks as well as assigning BHA's resources. The Project Manager will also be responsible for progress reporting.

GIS Consultant - a GIS Manager has expertise in the following areas:

- ArcGIS Enterprise (ArcSDE) Administration
- ArcGIS Enterprise Map Services Creation and Maintenance
- Geodatabase Design and Configuration
- ArcGIS Online Setup, Configuration and Map/App Creation including Collector for ArcGIS and Operations Dashboard
- GIS Data Conversion and Data Creation
- Map Production and Cartography
- GIS Integration with CAMA/Assessment Databases
- Parcel Fabric
- Parcel Mapping

GIS Data Technician - a GIS Data Technician has expertise in the following areas:

- GIS Data Conversion and Data Creation
- Map Production and Cartography
- Parcel Map Creation and Maintenance

GIS Web Developer - a GIS Web Developer has expertise in the following areas:

- GIS website design, creation, configuration and management
- Esri's JavaScript API
- ArcGIS Online Web App Builder Development

GIS Programmer - a GIS Programmer has expertise in the following areas:

- ArcObjects/ArcGIS Pro Programming
- Python Scripting
- ArcGIS Enterprise (ArcSDE) Administration
- ArcGIS Enterprise Map Services Creation and Maintenance
- Geodatabase Design and Configuration
- GIS Integration with CAMA/Assessment Databases
- ArcGIS Online Setup, Configuration and Map/App Creation including Field Maps and Operations Dashboard

The Contractor team has expertise available to Vermilion County in the following areas:

- Parcel Editing and Support
- Farmland Calculations and Support
- GIS Integration with Assessment/CAMA Databases
- ArcGIS Enterprise (ArcSDE) Database Administration, Maintenance and Support
- ArcGIS Enterprise (Map Services) Administration, Maintenance and Support
- ArcGIS Online Administration
- GIS Website Creation, Administration, Maintenance and Support
- Training and Technical Support for GIS Users

Progress Reporting

A project progress report will be provided and made available as a PDF to the Contractor and County's project team. This will be updated on a monthly basis. All tasks and subtasks will be listed. Vermilion County will be notified that progress on a task has been completed and is ready for review. The County will ask for clarification if needed. The progress reporting is not meant to replace regular project status meetings, but is meant to ensure incremental progress is made, all requests and revisions are well documented, and the project stays on track and within the projected timeline.

Project Team Responsibilities

The following describes the responsibilities of each project team.

Bruce Harris & Associates Responsibilities:

- Allocate staff resources as needed
- Provide all hardware and software required for offsite work

County Responsibilities:

- Provide all necessary system access privileges required to complete this project by the date requested by BHA
- Provide onsite hardware and software to support applications
- Maintain and provide as-needed software required
- Provide the necessary support staff from the County to assist the Contractor

Additional Provisions

Additional Provisions


1. Vermilion County shall pay the Contractor the sum of \$603,400 (Six Hundred Three Thousand Four Hundred Dollars) as compensation for the services listed within the Contract, provided the number of hours devoted to this agreement by Bruce Harris & Associates does not exceed 4,310 hours. This sum shall be paid over four years as follows:
 - a. Fiscal Year 2022 - \$150,850
 - b. Fiscal Year 2023 - \$150,850
 - c. Fiscal Year 2024 - \$150,850
 - d. Fiscal Year 2025 - \$150,850
2. Neither party may assign this contract without the prior written consent of the other.
3. The contract is subject to the annual budget and appropriation process and may be canceled upon notice or reduced in scope if not funded in whole or in part of each budget year.
4. This contract shall be interpreted, and the rights and liabilities of the parties hereto determined, in accordance with the laws of the State of Illinois.

Term of Contract

Term of Contract

This contract shall be in force from the date of execution and may be revised periodically subject to renegotiation concerning the services provided and the amount of the services, should the services differ from those outlined in the contract. Any and all revisions to the contract must be in writing and signed by both parties.

This Contract, as heretofore described, made and entered on this _____ day of _____, 2021.

By: 
Bruce C. Harris, President

By: 
Vermillion County
County Board Chairman

Bruce Harris personally appeared before me as an officer and agent of said corporation this 23 day of September, 2021.


Notary Public

