

Butler Township  
Vermilion County  
TR 21 (3850N)  
Section 20-02158-00-PV  
Day Labor  
Pavement Reconstruction

FILED

JUN 11 2021

*Cathy Johnson*  
COUNTY CLERK  
VERMILION CO. IL.

Index of Sheets

- 1 Cover Sheet
- 2 Summary of Quantities
- 3 General Notes
- 4 Location Map
- 5-7 Typical Sections
- 8-10 Standards

Approved 5-20-21

*Maureen Pumbly*  
Township Road Commissioner

Approved 5/20/21

*Adrian L. Greenwell*  
Vermilion County Engineer

Passed \_\_\_\_\_

List of Standards

- 280001-07 Temporary Erosion Control Systems
- BLR 21-9 Typical Application of Traffic Control  
Devices for Construction on Rural  
Local Highways

\_\_\_\_\_

District 5 Local Roads Engineer

Released Based on Limited  
Review June 8, 2021

*Robert A. ...*  
\_\_\_\_\_

Region 3 Engineer

State of Illinois  
Department of Transportation  
Division of Highways

Designed By: Janet E. Payonk, P.E.

Reviewed By: *Adrian L. Greenwell*

Adrian L. Greenwell  
Illinois Licensed Professional  
Engineer No. 062.046841  
License Expires 11/30/2021



**Butler Township  
Vermillion County  
TR 21 (3850N)  
Section 20-02158-00-PV  
Day Labor**

## **Summary of Quantities**

<b>Code No.</b>	<b>Item</b>	<b>Unit</b>	<b>Quantity</b>
40200800	Aggregate Surface Course, Type B	Ton	7322
X0100022	Till, Reshape and Compact Roadway	SQ YD	12203
X2020700	Shoulder Shaping (Special)	Unit	13728
X2140100	Grading and Shaping Ditches, Special	Foot	13728
X2501000	Seeding, Class 2 (Special)	Acre	0.95

### **Application Rates**

1.8 Tons/CY    Aggregate Surface Course, Type B

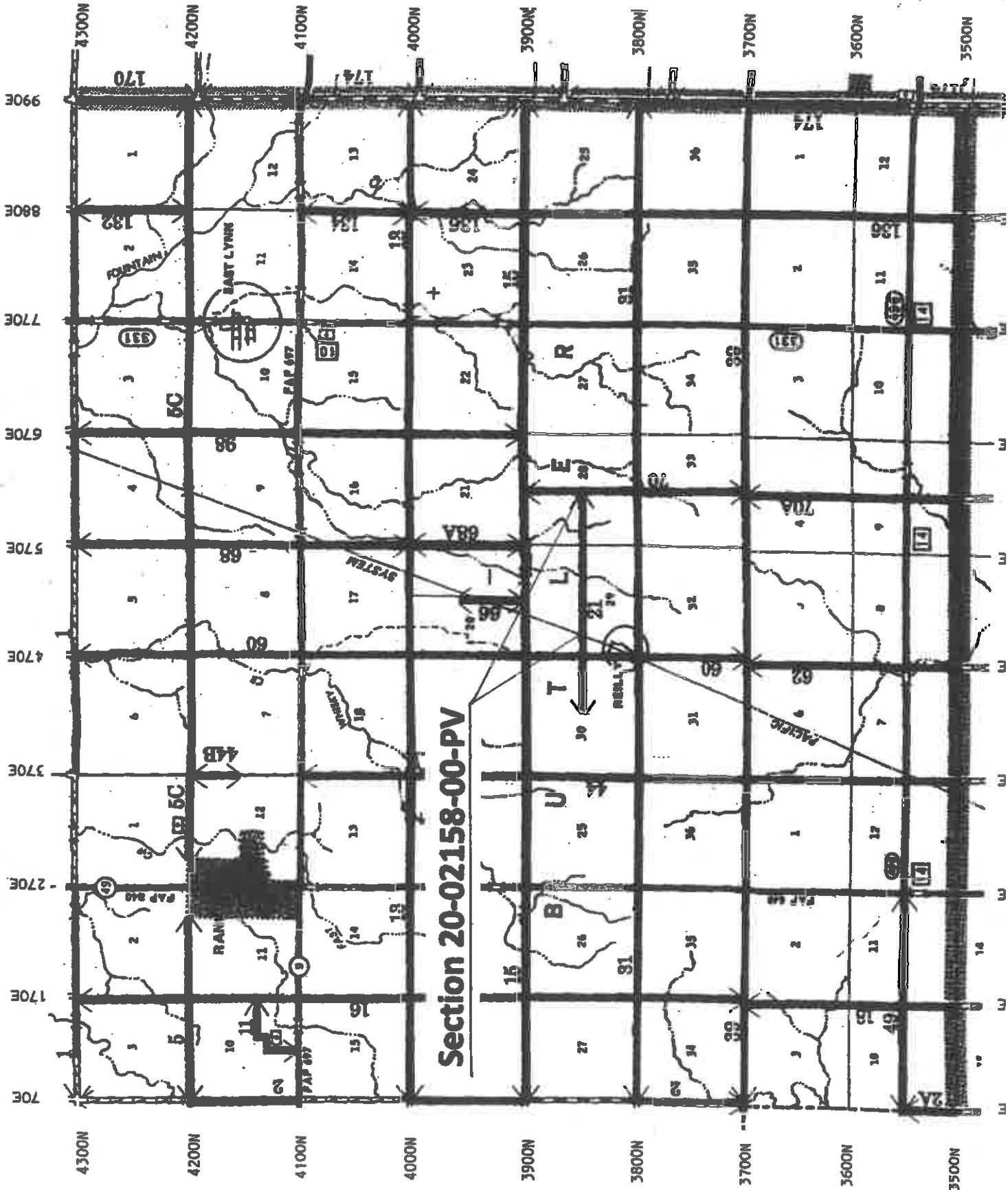
**General Notes:**

- 1. All work shall be done in accordance with applicable portions of the Standard Specifications for Road and Bridge Construction, Adopted April 1, 2016; the Supplemental Specifications and Recurring Special Provisions, Adopted January 1, 2021; and any other provisions provided or noted herein.**
- 2. NO excavation from the ditch cleaning or any other operation is allowed to leave the project limits. Material from ditch cleaning may be placed on the foreslope or back slope within the Right-of-Way.**
- 3. Grading and Shaping Ditches, Special is to be used for ditch cleaning.**
- 4. Shoulder Shaping (Special) is to be used to improve the shoulder in areas that need extra width to accommodate additional aggregate placement and maintain a 3:1 slope.  
1 unit = 1 foot**
- 5. Aggregate Surface Course, Type B material is to be CA10 Crushed Stone.**
- 6. Any disturbed areas should be seeded, fertilized and mulched upon completion in accordance with Section 250 and 251 of the Standard Specifications for Road and Bridge Construction. If seed cannot be placed in a timely manner, then some type of erosion control shall be placed using Standard 280001-07.**

# BUTLER

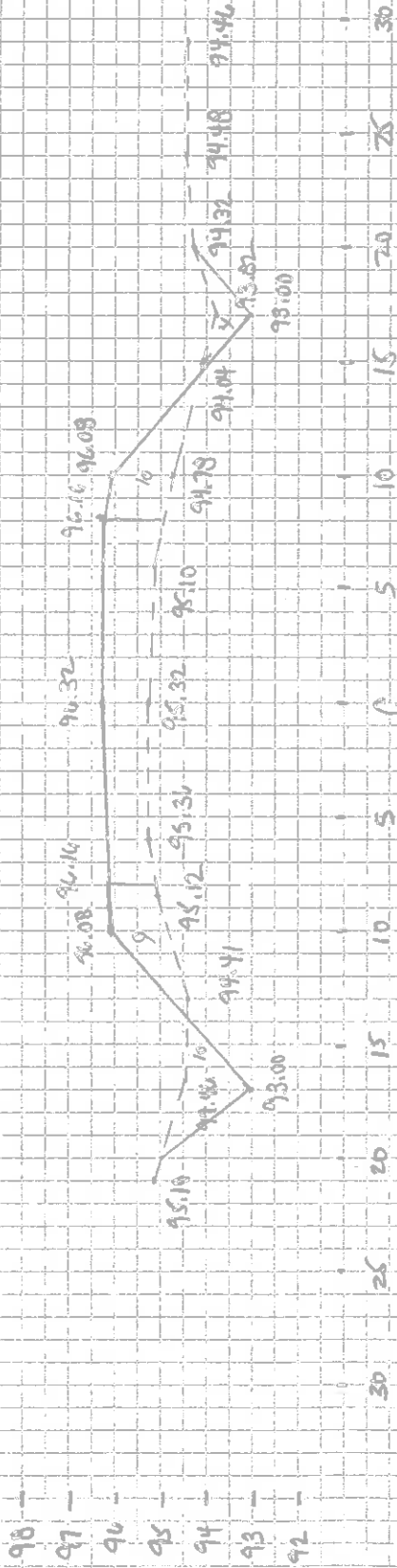


9-19-01



3850 N Bunker

width 11.03

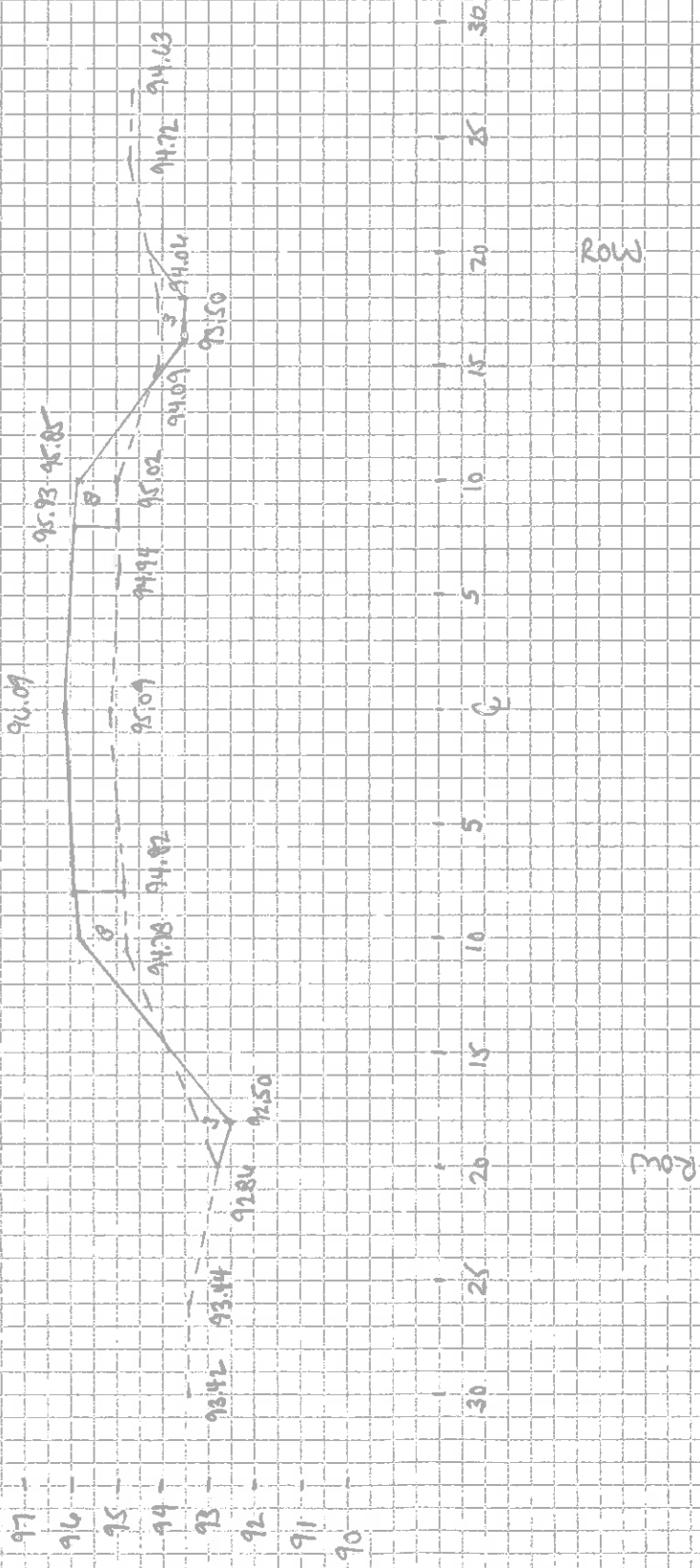


ROW

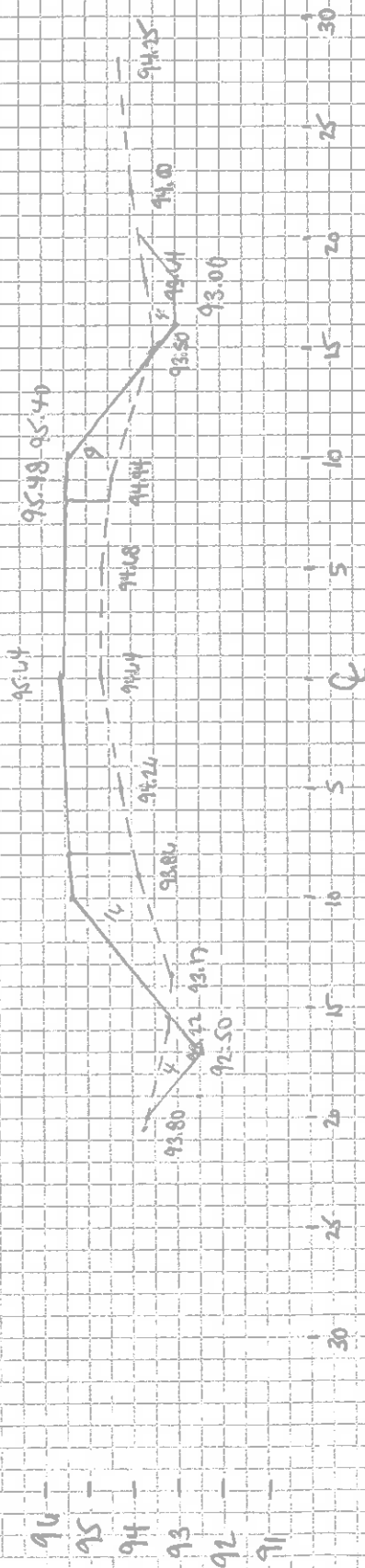
ROW

3850 N Burton

wide 1.61

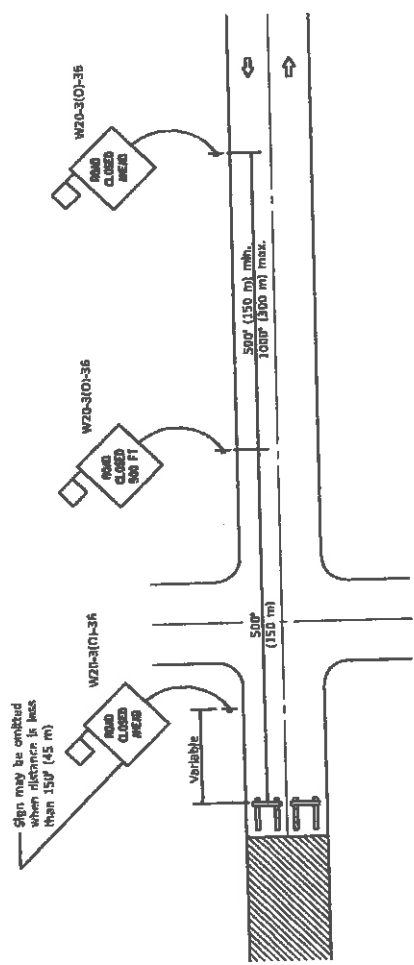


3850N BATHUR  
mile 1.13



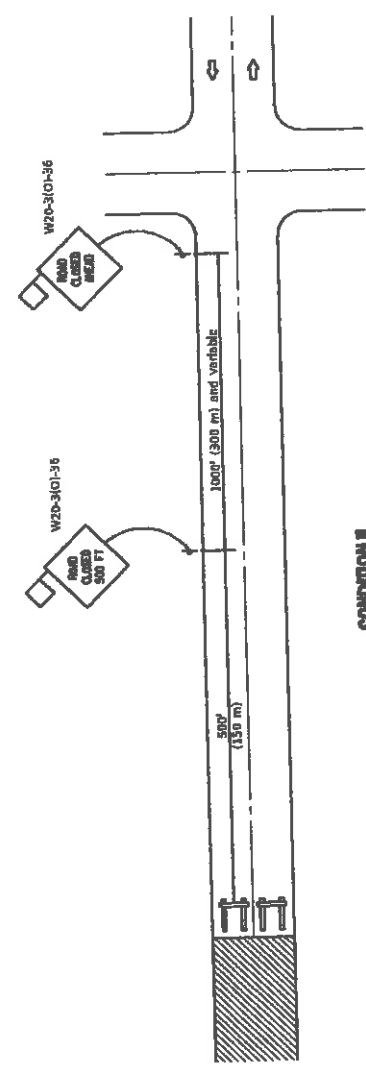
Row

Row



**CONDITION 1**

When distance from closure to crossroad is less than 150' (45 m)



**CONDITION 2**

When distance from closure to crossroad is greater than 150' (45 m)

**SYMBOLS**

- Work area
- Type III Barricade
- Sign with 18x18 (450x450) mm orange flag attached

**GENERAL NOTES**

Type III Barricades and R11-2-420 signs shall be positioned as shown in "Road Closed To All Traffic" detail on Highway Standard 701301.

Two Type A Low Intensity Flashing Lights shall be used on each approach in advance of the work area during hours of darkness. One light shall be positioned above the barricades and the other above the first advance warning sign.

All warning signs shall have minimum dimensions of 36 x 36 (900 x 900) and have a black legend on an orange reflectorized background.

When fluorescent signs are used, orange flags are not required.

Longitudinal dimensions may be adjusted to fit field conditions.

When the distance between the barricade and the intersection is between 150' (45 m) and 200' (60 m), the advance sign shall be placed at the intersection. When the distance between the barricade and the intersection is over 200' (60 m), an additional sign shall be placed at the intersection. The additional sign shall give the distance to the barricade in miles or fractions of a mile.

All dimensions are in inches (millimeters) unless otherwise shown.

**TYPICAL APPLICATION OF TRAFFIC CONTROL DEVICES FOR CONSTRUCTION ON RURAL LOCAL HIGHWAYS**

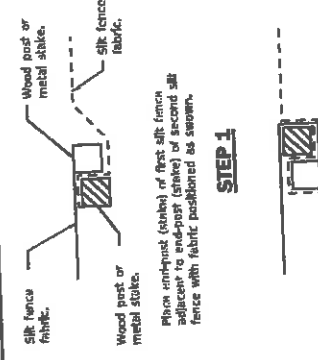
STANDARD B.L.R. 21-0

DATE	REVISIONS
1-1-12	Omitted two notes from GENERAL NOTES
1-1-09	Switched units to English (metric).

Illinois Department of Transportation  
 PROJECT: JAMES L. 2012  
 ENTERED ON LOCAL ROAD AND STREETS APPROACH: JAMES L. 2012  
 DESIGNED BY: [Signature]  
 CHECKED BY: [Signature]  
 APPROVED BY: [Signature]  
 SPECIAL REQUIREMENTS: NONE

RESULU 1-3-9





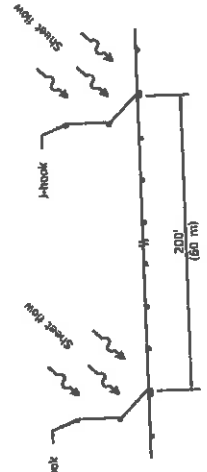
**STEP 1**

Rotate posts (stakes) together 180° clockwise and drive both posts (stakes) 15 (450) into ground.

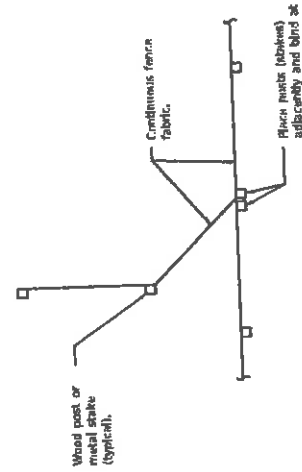
**STEP 2**

(Not applicable for J-hooks)

**ATTACHING TWO SILT FILTER FENCES**

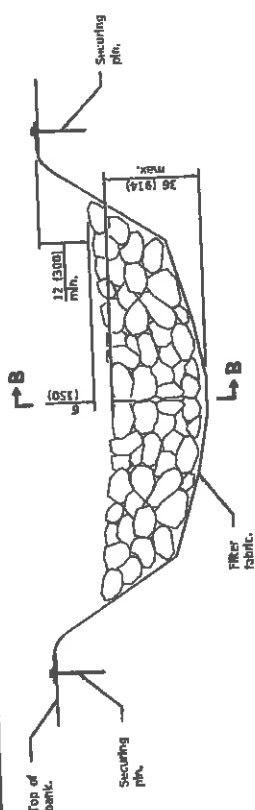


**SILT FILTER J-HOOK PLACEMENT**



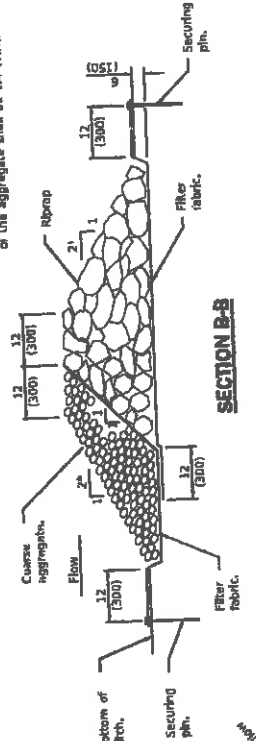
**J-HOOK**

Missouri Department of Transportation  
 Missouri  
 Kansas  
 Arkansas  
 Oklahoma  
 Louisiana  
 Texas  
 Mississippi  
 Alabama  
 Georgia  
 Florida  
 South Carolina  
 North Carolina  
 Virginia  
 West Virginia  
 Kentucky  
 Tennessee  
 Mississippi  
 Alabama  
 Georgia  
 Florida  
 South Carolina  
 North Carolina  
 Virginia  
 West Virginia  
 Kentucky  
 Tennessee  
 Missouri  
 Kansas  
 Arkansas  
 Oklahoma  
 Louisiana  
 Texas  
 Mississippi  
 Alabama  
 Georgia  
 Florida  
 South Carolina  
 North Carolina  
 Virginia  
 West Virginia  
 Kentucky  
 Tennessee



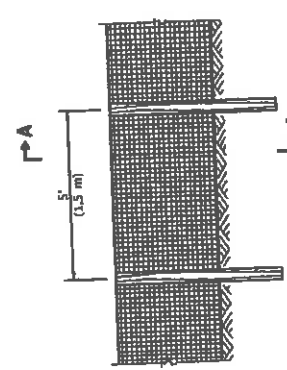
**ELEVATION**

When the ditch check is within the clear zone and intended to open to traffic, the side approach slope of the aggregate shall be 1:4 (V:H).



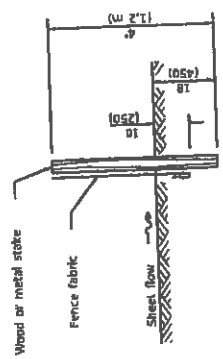
**SECTION B-B**

**AGGREGATE DITCH CHECK**

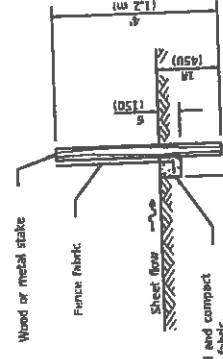


**ELEVATION**

**SILT FILTER FENCE AS A PERIMETER EROSION BARRIER**



**SLICE METHOD**



**TRENCH METHOD SECTION A-A**

Excavate, backfill and compact trench to secure fabric.

**GENERAL NOTES**

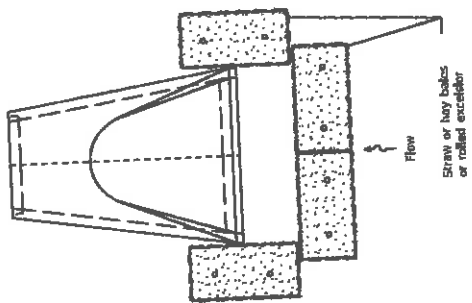
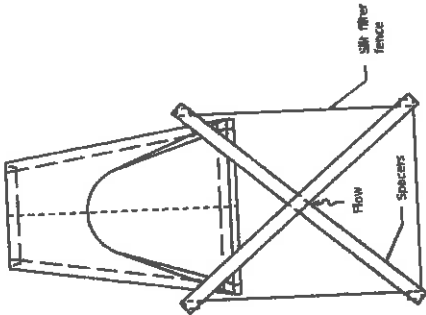
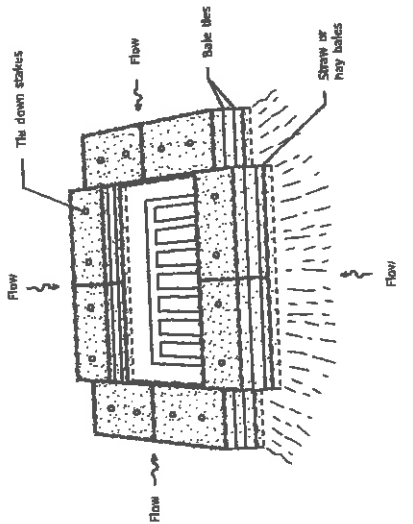
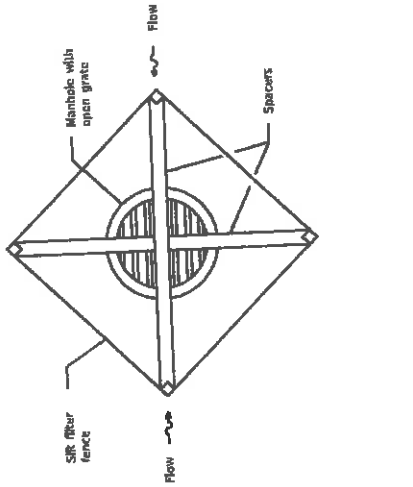
The installation details and dimensions shown for perimeter erosion barriers shall also apply for inlet and pipe protection.  
 All dimensions are in inches (millimeters) unless otherwise shown.

**TEMPORARY EROSION CONTROL SYSTEMS**

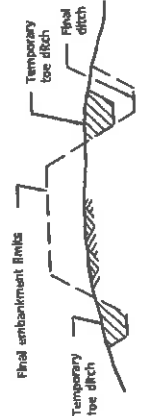
STANDARD 280001-07

DATE	REVISIONS
1-1-13	Corrected notation for flowline (L) on SEDIMENT BASIN ELEVATION.
1-1-12	Omitted hay/straw perimeter barrier. Added SLICE METHOD to SECTION A-A.

(Sheet 1 of 2)



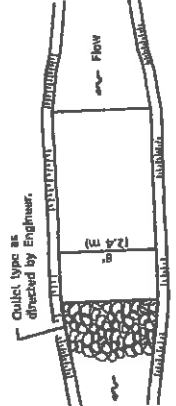
**INLET AND PIPE PROTECTION**



**TYPICAL CUT CROSS-SECTION**

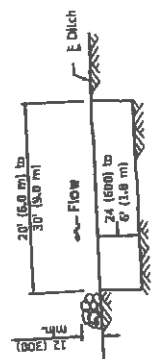
**TYPICAL FILL CROSS-SECTION**

**TEMPORARY DITCHES FOR CUT & FILL SECTIONS**



The long dimension should be parallel with the direction of the flow. Accumulated silt shall be removed anytime the basin become 75% filled.

**PLAN**



The performance of the basin will improve if put into a series.

**ELEVATION**

**SEDIMENT BASIN**

**TEMPORARY EROSION CONTROL SYSTEMS**

(Sheet 2 of 2)

STANDARD 280001-07

Illinois Department of Transportation DIVISION OF HIGHWAYS ENGINEER OF PORTLAND CEMENTS APPROVED: [Signature] EXP. DATE: 12/31/2018	1-1-1918 2018 2018 2018
---	----------------------------------